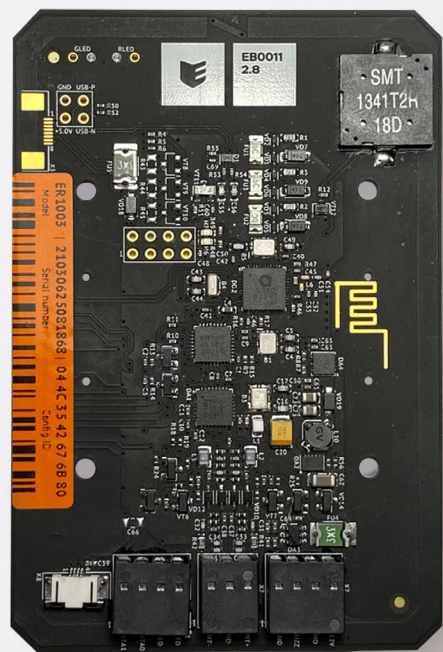


ESMART® Reader
OEM Series

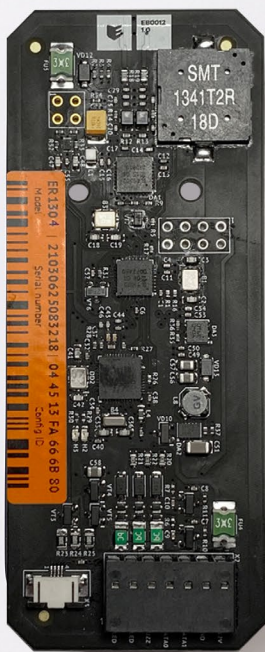
Two dimensions, many opportunities



61 mm

Gangbox

ESMART® Reader series OEM could be easily embedded inside third party equipment, e.g. intercoms, turnstiles or gates



37 mm

Mullion **NEW**

Narrow version featuring width of 37 mm is engineered to fit into equipment with limited installation space

Different technologies, one reader



MIFARE® Classic

Works with MIFARE® Classic credentials reading the UID or Sector Data with Crypto 1 key encryption



Bank cards

Supports reading of bank cards in different modes. Reading mode is determined by facility requirements



NFC + BLE

Compatible with 2.4 GHz (BLE) and 13.56 MHz (NFC) mobile credentials powered by ESMART® Access on iOS and Android



MIFARE® Plus

Works with MIFARE® Plus credentials reading the UID or Sector Data in SL3 mode with AES128 key encryption. Backward compatible with SL1 mode



ISO14443A / ISO15693

Reads the UID from any ISO14443A and ISO15693 credentials in a range up to 15 cm



ESMART® Access

Supports Secure Multi-layered credential technology with five degrees for data authenticity and privacy protection

Access guarded



**Protected
container**

ESMART® Access technology

- AES-128 encryption
- Diversification of encryption keys
- Credential CMAC signature
- Protection against Replay attacks
- Globally Unique User Identifier

iOS and Android

- Works via BLE
- Works via NFC

JCOP card

- Bank-level chip platform
- Applet for Access control
- Co-brand capabilities



**MIFARE
zone**



Mobile enabled

ESMART® Access mobile application

Use your phone with a virtual card along with a regular smartcards in a more convenient way

iOS

Mobile identification works via BLE with iPhones thanks to secure ESMART® Access technology

Android

Depending on operation mode and phone model identification works via NFC or BLE



Full integration



Order model:
EA1360 – Round-shaped External NFC antenna
EA1361 – External NFC antenna for CAME intercoms

External NFC antenna

Device can be completed with an external NFC antenna making it possible to integrate the solution even in extremely limited space conditions.

External antenna connection is only supported by the Gangbox model. The Mullion model does not support external NFC antenna connection

Indication

LED and Buzzer indication is implemented on the reader side only. No additional indication is available on the antenna side

Antenna activation

In order to activate an external NFC antenna it is necessary to apply a special configuration to the reader. It can be created with ESMART® Configurator application

Security

External NFC antenna connection helps to increase the access point security making it possible to install a Wiegand reader in the trusted zone close to a Control panel, and place an antenna in the untrusted zone

Reader management in the field

ESMART® Configurator mobile application

Access Control Administrators and Installers can manage ESMART® Readers right on the wall via BLE or NFC. It is possible to configure: Credentials reading modes, Wiegand output settings, BLE settings (range and reading frequency), LED and Buzzer behavior and other settings

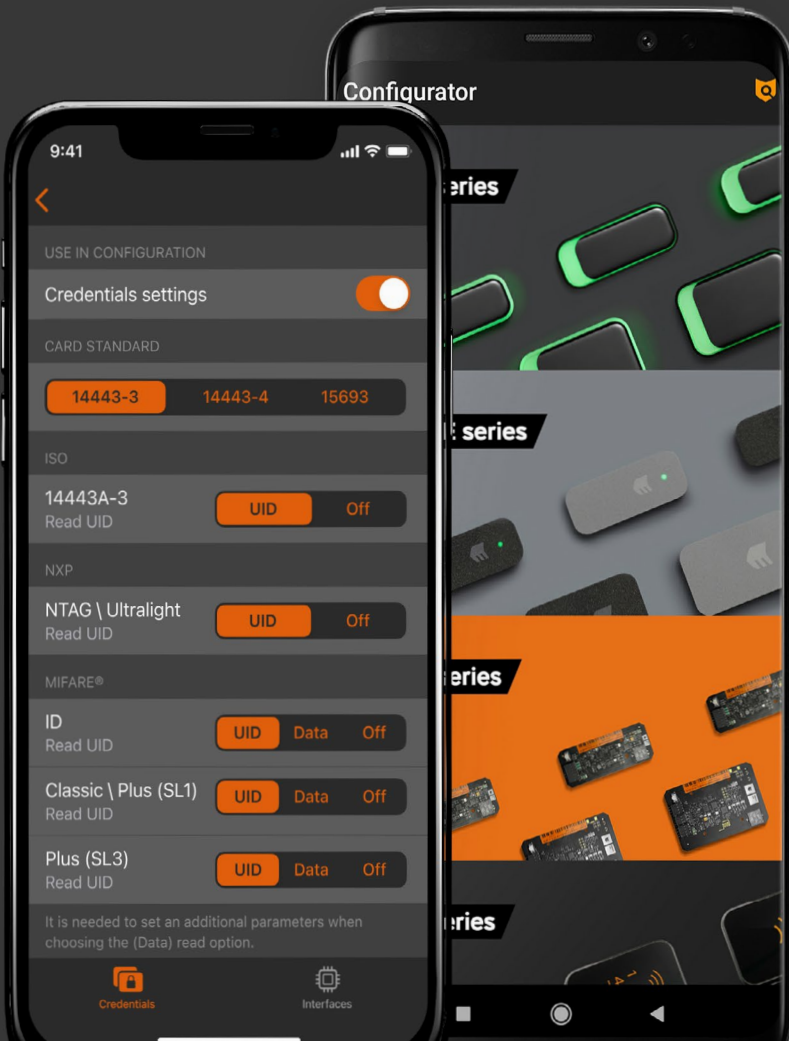
User Configurations **NEW**

Recently introduced opportunity to create User Configurations right in the mobile application for advanced users



It is possible to order a batch of devices with individual configuration from the factory

Order option:
EO1090 – for Gangbox
EO1390 – for Mullion



Challenges. Accepted



Order model:
EA1340 – for Gangbox
EA1740 – for Mullion

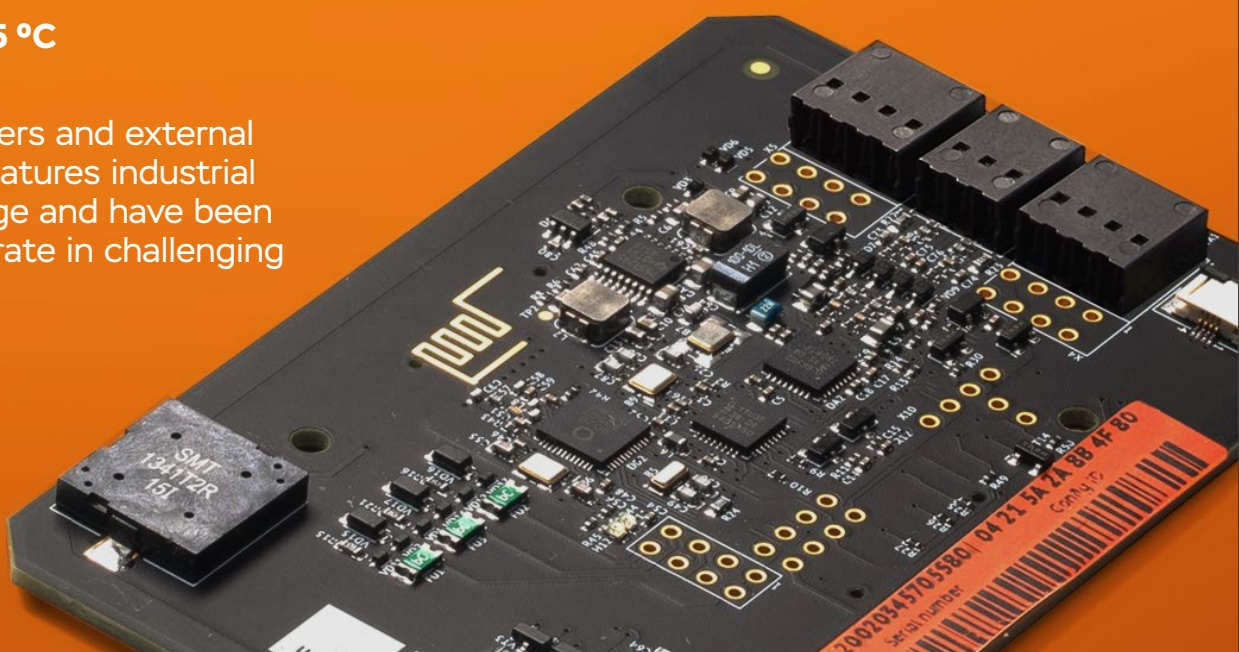
Metal Installation Kit

Installation on a metal surface reduces the reading range significantly. The special material of the Kit helps to restore up to 70 % of the original range.

Installation Kit is provided with adhesive surface. The Kit includes two plates. It is recommended to install one on another to achieve the maximum reading range

 -40...+85 °C

OEM Series readers and external NFC antennas features industrial temperature range and have been designed to operate in challenging conditions



Perfect fit

Expanded device Lineup **NEW**

The product line of ESMART® Reader series OEM has been supplemented with the LITE Lineup launch. Both product lines (BLE and LITE) are supplied in two housing dimensions (Gangbox and Mullion) featuring the same appearance and custom design capabilities. The devices differ functionally only.

Now you are able to combine the device models within one project to find an optimal and cost-effective solution perfectly fitting your project needs

LITE Lineup

BLE Lineup

Mobile access

Not supported

ESMART® Access via BLE and NFC

Credentials

ESMART® Access, MIFARE® Classic, Plus (SL1/SL3), ISO14443 (UID)

LITE

+

ISO15693 (UID)

Bank cards

Read the UID, MIFARE® emulation mode

LITE

+

Read the CPLC

Reader management

Via NFC

LITE

+

Via BLE

Output

Wiegand 26...58, custom

Wiegand 26...58, custom

Readers



Model	ER1013LITE		ER1314LITE		ER1003BLE	ER1304BLE
Housing	Without Housing					
2.4 GHz (BLE) Credential Compatibility	—			ESMART® Access Mobile Credentials		
13.56 MHz (NFC) Credential Compatibility	<ul style="list-style-type: none">• ESMART® Access• MIFARE® Classic, MIFARE® Plus (SL1 / SL3)• ISO14443A• Bank cards			<ul style="list-style-type: none">• ESMART® Access• MIFARE® Classic, MIFARE® Plus (SL1 / SL3)• ISO14443A and ISO15693• ESMART® Access Mobile Credentials• Bank cards		
Typical Read Range (NFC)	Up to 4 in (10 cm)					
Typical Read Range (BLE)	—			Up to 33 ft (10 m)		
Connection Interface	Wiegand					
Data Communication Format	Wiegand 26, 34, 58, custom. Wiegand 26 in basic configuration					
Panel Connection	Terminal Strip					
Operating Voltage	5-16 VDC					
Current Draw	Peak: 150 mA at 12V					
Device Input	Input: Four-mode LED (RLED, GLED), Buzzer (BUZZ) @ Active Low					
Device Management	Via NFC only using Master Card			Via NFC using Master Card and via BLE		
Configuration capabilities with ESMART® Configurator mobile application	<ul style="list-style-type: none">• ISO 14443-3: UID / Off• ISO 14443-4: UID / Off• NTAG / Ultralight: UID / Off• MIFARE® Classic / Plus (SL1): UID / DATA / Off• MIFARE® Plus (SL3): UID / DATA / Off			<ul style="list-style-type: none">• MIFARE® DESFire: UID / Off• ESMART® Access NFC HCE: On / Off• ESMART® Access JCOP: On / Off• RGB LED and Buzzer settings		<ul style="list-style-type: none">• Sector number, block number, data length and offset. Encryption keys.• Data format, quantity and byte order transmitted through Wiegand interface, parity bits
	<ul style="list-style-type: none">• Bank cards: UID / Off			<ul style="list-style-type: none">• Bank cards: UID / CPLC / Off• Other JCOP: UID / CPLC / Off• ISO15693: UID / Off• ICODE SLIX2: UID / Off• ICODE DNA: UID / Off• ESMART® Access BLE: range and reading frequency		
External NFC antenna support	Yes	No	Yes		No	
Mounting	Embeddable	Embeddable with limited space	Embeddable		Embeddable with limited space	
Dimensions (width x length x depth)	3.62 x 2.4 x 0.28 in (92 x 61 x 7.5 mm)	3.62 x 1.45 x 0.28 in (92 x 37 x 7.5 mm)	3.62 x 2.4 x 0.28 in (92 x 61 x 7.5 mm)		3.62 x 1.45 x 0.28 in (92 x 37 x 7.5 mm)	
Product Weight	0.78 oz (22 g)	0.63 oz (18 g)	0.78 oz (22 g)		0.63 oz (18 g)	
Operating Temperature & Humidity	-40° F to +185° F (-40° C to +85° C), 0% to 95% non-condensing					
Storage temperature	-40° F to +185° F (-40° C to +85° C)					
Ingress Protection	—					
Supplied parts	Reader (1), Master Card (1), Installation kit (1), Installation Guide (1)					
Regulatory	EAC					
Warranty	Limited Lifetime					

Options and accessories

Option	Gangbox	Mullion
Individual configuration	EO1090	EO1390



Model	ER1360		ER1361
Housing	Without Housing		
2.4 GHz (BLE) Credential Compatibility	—		
13.56 MHz (NFC) Credential Compatibility	<ul style="list-style-type: none">ESMART® AccessMIFARE® ID, MIFARE® Classic, MIFARE® Plus (SL1 / SL3)ISO14443A and ISO15693ESMART® Access Mobile CredentialsBank cards		
Typical Read Range (NFC)	Up to 2 in (5 cm)		
Connection Interface	Three-contact, symmetrical		
Cable length	78.4 in (2 m)		5.9 in (15 cm)
Dimensions (width x length x depth)	1.77 x 1.77 x 0.28 in (45 x 45 x 7.5 mm)		2.08 x 1.25 x 0.28 in (53 x 32 x 7.5 mm)
Product Weight	1.4 oz (40 g)		1.4 oz (40 g)
Operating Temperature & Humidity	-40° F to +185° F (-40° C to +85° C), 0% to 95% non-condensing		
Ingress Protection	—		
Storage temperature	-40° F to +185° F (-40° C to +85° C)		
Supplied parts	External antenna (1)		
Warranty	Limited Lifetime		



Model	EA1340		EA1740
Supplied parts	Ferrite plate (2)		
Dimensions (width x length x depth)	3.62 x 2.4 x 0.03 in (92 x 61 x 1 mm)		3.62 x 1.45 x 0.03 in (92 x 37 x 1 mm)
Product Weight	0.2 oz (7 g)		0.18 oz (5 g)
Operating Temperature & Humidity	-40° F to +185° F (-40° C to +85° C), 0% to 95% non-condensing		
Storage temperature	-40° F to +185° F (-40° C to +85° C)		
Warranty	Limited Lifetime		