



ESMART® Reader
NEO Series

Two dimensions, many opportunities



69 mm

Gangbox

Gangbox housing is suitable for installation on any flat surfaces and features a big area for custom design of the front pannel



46 mm

Mullion **NEW**

Mullion housing featuring width of 46 mm perfectly fits for door applications requiring a narrow reader

Different technologies, one reader



MIFARE® Classic

Works with MIFARE® Classic credentials reading the UID or Sector Data with Crypto 1 key encryption



Bank cards

Supports reading of bank cards in different modes. Reading mode is determined by facility requirements



NFC + BLE

Compatible with 2.4 GHz (BLE) and 13.56 MHz (NFC) mobile credentials powered by ESMART® Access on iOS and Android



MIFARE® Plus

Works with MIFARE® Plus credentials reading the UID or Sector Data in SL3 mode with AES128 key encryption. Backward compatible with SL1 mode



ISO14443A / ISO15693

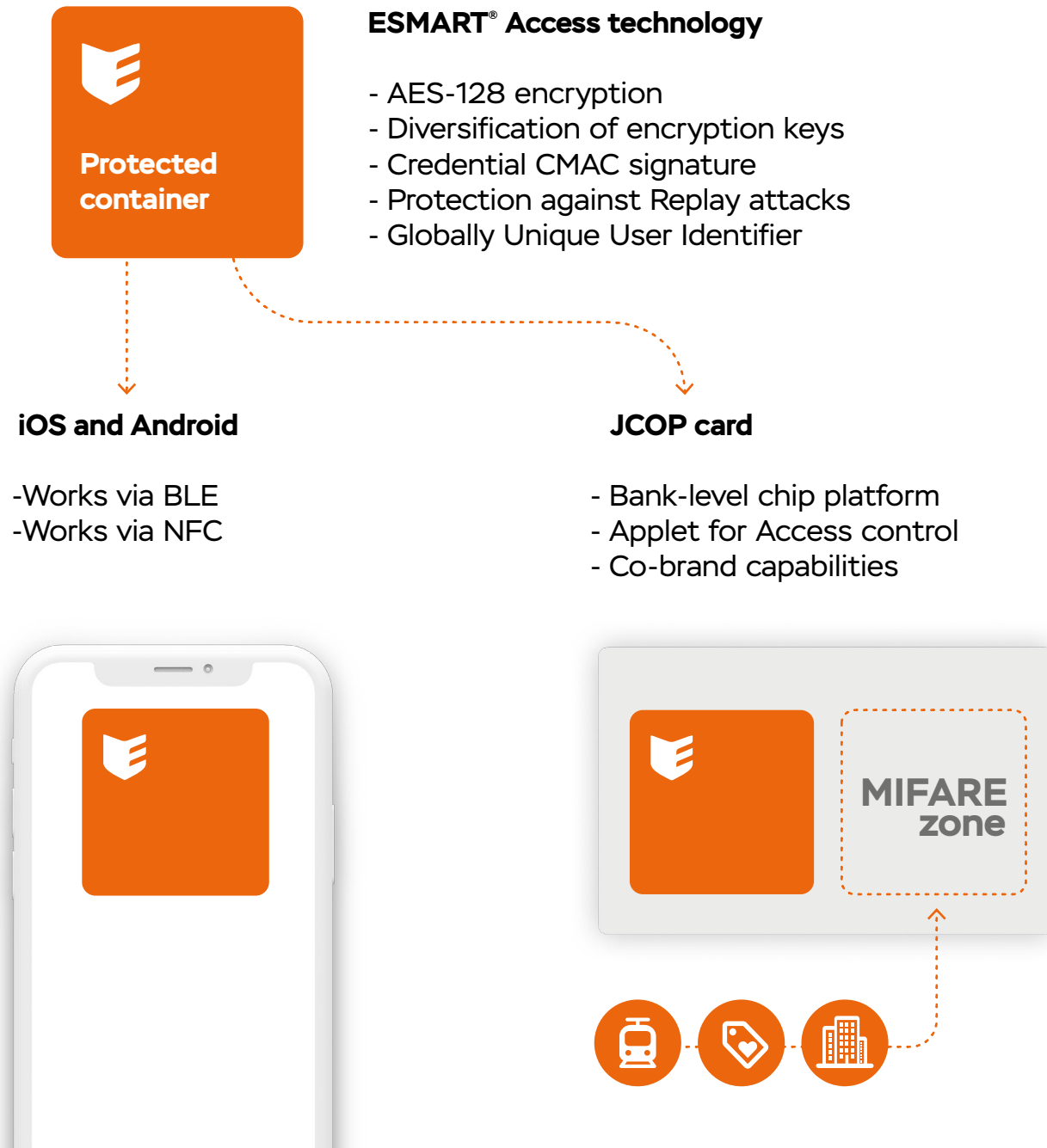
Reads the UID from any ISO14443A and ISO15693 credentials in a range up to 15 cm



ESMART® Access

Supports Secure Multi-layered credential technology with five degrees for data authenticity and privacy protection

Access guarded



Mobile enabled

ESMART® Access mobile application

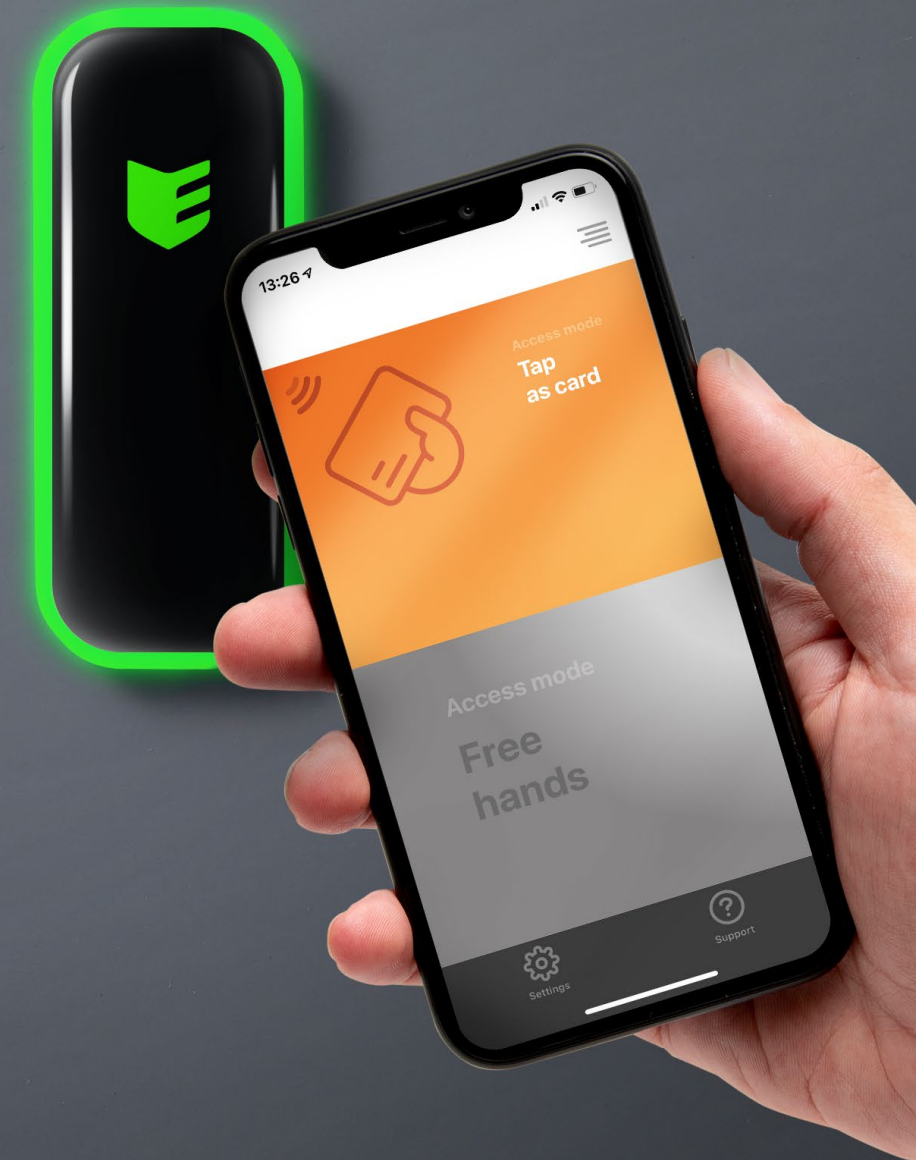
Use your phone with a virtual card along with a regular smartcards in a more convenient way

iOS

Mobile identification works via BLE with iPhones thanks to secure ESMART® Access technology

Android

Depending on operation mode and phone model identification works via NFC or BLE



Canvas for self-expression

Bubble surface finish

Glossy three-dimensional surface finish adds advantageous appearance to a housing. It has UV-protection from colors fading on the direct sun. Also it keeps panel solid and protected from scratches thanks to self-recovery effect

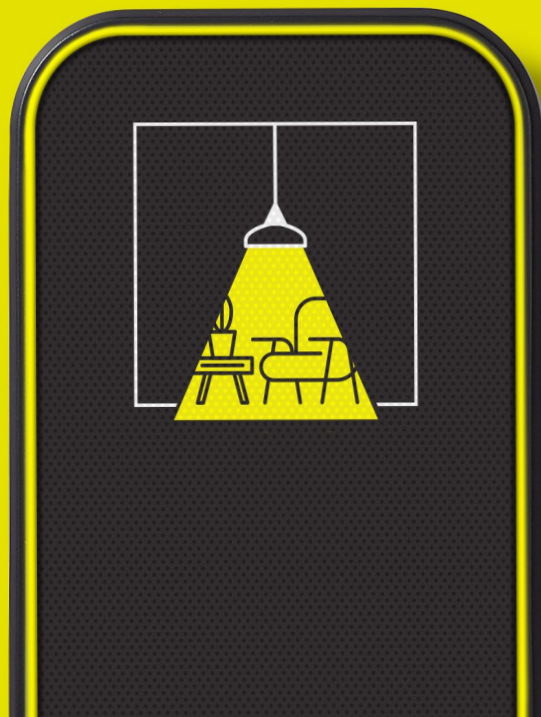
Order option:
EO1650 – for Gangbox
EO1450 – for Mullion



Individual front panel design

Individual design of reader's front panel imparts individuality of your brand to every device. It is possible to arrange a full-color logo or any figure all over an entire device panel. The arranged design elements can be transparent, thus highlighted with RGB-backlight of the device

Order option:
EO1660 – for Gangbox
EO1460 – for Mullion



Reader management in the field


ESMART® Configurator mobile application

Access Control Administrators and Installers can manage ESMART® Readers right on the wall via BLE or NFC. It is possible to configure: Credentials reading modes, Wiegand output settings, BLE settings (range and reading frequency), LED and Buzzer behavior and other settings

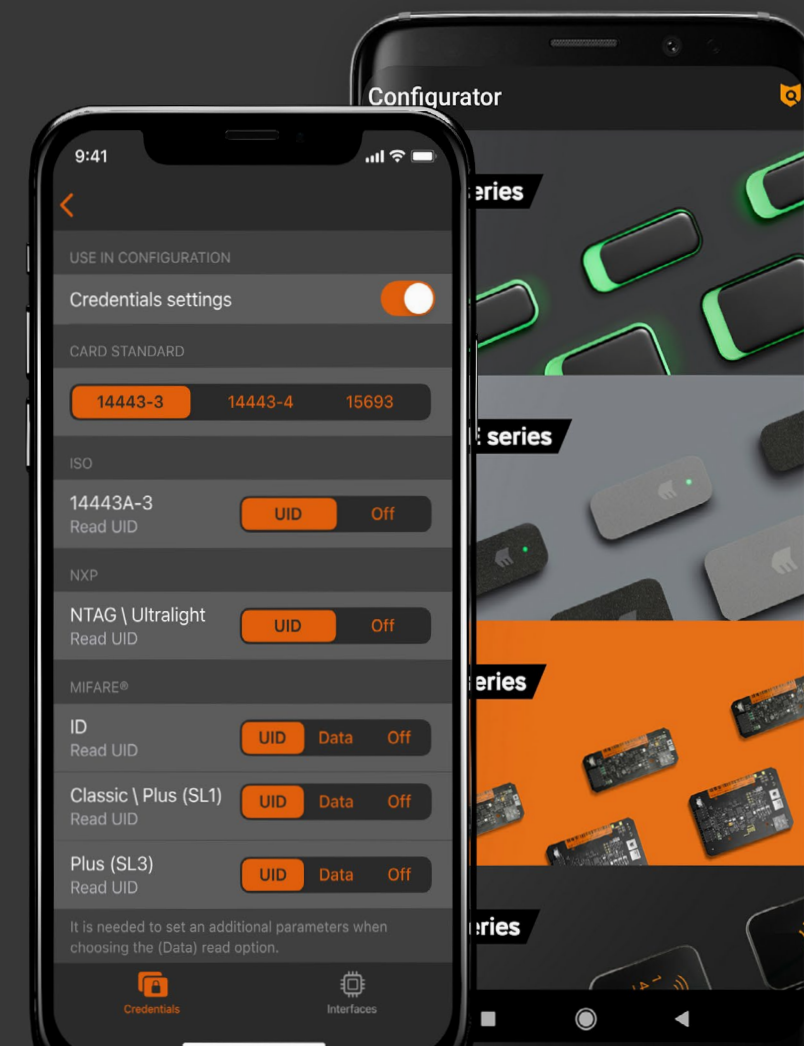
User Configurations **NEW**

Recently introduced opportunity to create User Configurations right in the mobile application for advanced users



 It is possible to order a batch of devices with individual configuration from the factory

Order option:
EO1690 – for Gangbox
EO1490 – for Mullion



Challenges. Accepted



Order model:
EA1240 – for Gangbox
EA1640 – for Mullion

Metal Installation Kit

Installation on a metal surface reduces the reading range significantly. The special material of the Kit helps to restore up to 70 % of the original range.

Installation Kit is provided with adhesive surface. The Kit includes two plates. It is recommended to install one on another to achieve the maximum reading range



Ingress Protection

ESMART® Reader is completely protected against ingress of moisture and dust according to IP68 standard



-40...+85 °C

The readers feature industrial temperature range and are completely protected against any weather challenges



Perfect fit

Expanded device Lineup **NEW**

The product line of ESMART® Reader series NEO has been supplemented with the LITE Lineup launch. Both product lines (BLE and LITE) are supplied in two housing dimensions (Gangbox and Mullion) featuring the same appearance and custom design capabilities. The devices differ functionally only.

Now you are able to combine the device models within one project to find an optimal and cost-effective solution perfectly fitting your project needs

LITE Lineup

BLE Lineup

Mobile access

Not supported

ESMART® Access via BLE and NFC

Credentials

ESMART® Access, MIFARE® Classic, Plus (SL1/SL3), ISO14443 (UID)

LITE

+

ISO15693 (UID)

Bank cards

Read the UID, MIFARE® emulation mode

LITE

+

Read the CPLC

Reader management

Via NFC

LITE

+

Via BLE

Output

Wiegand 26...58, custom

Wiegand 26...58, custom

Black housing surface finish



Bubble
Order option: EO1650



Metal
Order option: EO1653



Bubble
Order option: EO1450



Metal
Order option: EO1453



Triangles
Order option:EO1652



Silk
Order option: EO1654



Triangles
Order option: EO1452



Silk
Order option: EO1454



Zig-Zag
Order option: EO1655



Dots
Order option: EO1651

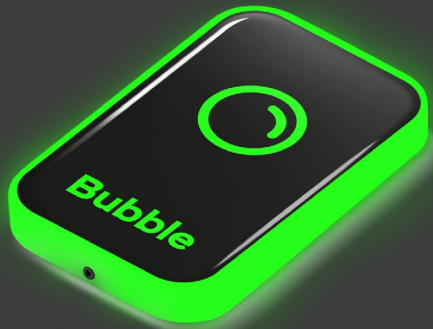


Zig-Zag
Order option: EO1455

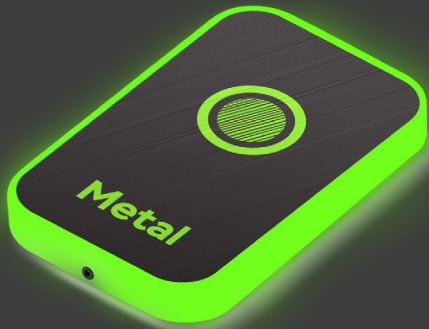


Dots
Order option:EO1451

White housing surface finish



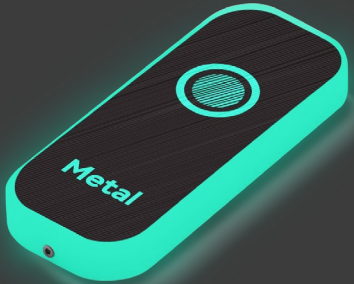
Bubble
Order option: EO1650



Metal
Order option: EO1653



Bubble
Order option:EO1450



Metal
Order option:EO1453



Triangles
Order option: EO1652



Silk
Order option: EO1654



Triangles
Order option: EO1452



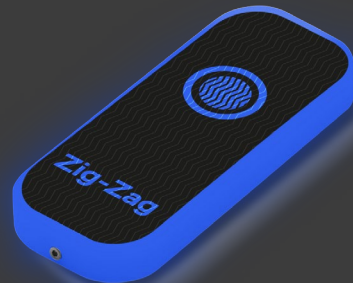
Silk
Order option: EO1454



Zig-Zag
Order option: EO1655



Dots
Order option: EO1651



Zig-Zag
Order option: EO1455



Dots
Order option: EO1451

Readers



Model	ER1612	LITE	ER1412	LITE	ER1602	BLE	ER1402	BLE	
Housing	Polycarbonate + ABS								
Color	Black / White (transparent for backlight)								
2.4 GHz (BLE) Credential Compatibility	—				ESMART® Access Mobile Credentials				
13.56 MHz (NFC) Credential Compatibility	<ul style="list-style-type: none">• ESMART® Access• MIFARE® Classic, MIFARE® Plus (SL1 / SL3)• ISO14443A• Bank cards				<ul style="list-style-type: none">• ESMART® Access• MIFARE® Classic, MIFARE® Plus (SL1 / SL3)• ISO14443A and ISO15693• ESMART® Access Mobile Credentials• Bank cards				
Typical Read Range (NFC)	Up to 4 in (10 cm)								
Typical Read Range (BLE)	—				Up to 33 ft (10 m)				
Connection Interface	Wiegand								
Data Communication Format	Wiegand 26, 34, 58, custom. Wiegand 26 in basic configuration								
Pigtail Length	18 in (0.5 m)								
Operating Voltage	5-16 VDC								
Current Draw	Peak: 150 mA at 12V								
Device Input	Input: Four-mode LED (RLED, GLED), Buzzer (BUZZ) @ Active Low								
Device Management	Via NFC only using Master Card				Via NFC using Master Card and via BLE				
Configuration capabilities with ESMART® Configurator mobile application	<ul style="list-style-type: none">• ISO 14443-3: UID / Off• ISO 14443-4: UID / Off• NTAG / Ultralight: UID / Off• MIFARE® Classic / Plus (SL1): UID / DATA / Off• MIFARE® Plus (SL3): UID / DATA / Off				<ul style="list-style-type: none">• MIFARE® DESFire: UID / Off• ESMART® Access NFC HCE: On / Off• ESMART® Access JCOP: On / Off• RGB LED and Buzzer settings				<ul style="list-style-type: none">• Sector number, block number, data length and offset. Encryption keys.• Data format, quantity and byte order transmitted through Wiegand interface, parity bits
	<ul style="list-style-type: none">• Bank cards: UID / Off				<ul style="list-style-type: none">• Bank cards: UID / CPLC / Off• Other JCOP: UID / CPLC / Off• ISO15693: UID / Off• ICODE SLIX2: UID / Off• ICODE DNA: UID / Off• ESMART® Access BLE: range and reading frequency				
Mounting	Flat surface		Door installations		Flat surface		Door installations		
Dimensions (width x length x depth)	4.37 x 2.71 x 0.39 in (111 x 69 x 10 mm)		4.37 x 1.81 x 0.39 in (111 x 46 x 10 mm)		4.37 x 2.71 x 0.39 in (111 x 69 x 10 mm)		4.37 x 1.81 x 0.39 in (111 x 46 x 10 mm)		
Product Weight	4.9 oz (139 g)		3.5 oz (100 g)		4.9 oz (139 g)		3.5 oz (100 g)		
Operating Temperature & Humidity	-40° F to +185° F (-40° C to +85° C), 0% to 95% non-condensing								
Storage Temperature	-40° F to +185° F (-40° C to +85° C)								
Ingress Protection	According to IP68								
Supplied parts	Reader (1), Master Card (1), Installation kit (1), Installation Guide (1)								
Regulatory	EAC								
Warranty	Limited Lifetime								

Options and accessories

Option	Gangbox	Mullion
White housing color	EO1612	EO1412
Bubble surface finish	EO1650	EO1450
Dots surface finish	EO1651	EO1451
Triangles surface finish	EO1652	EO1452
Metal surface finish	EO1653	EO1453
Silk surface finish	EO1654	EO1454
Zig-Zag surface finish	EO1655	EO1455
Individual design	EO1660	EO1460
Individual configuration	EO1690	EO1490



Model	EA1140	EA1540
Supplied parts	Ferrite plate (2)	
Dimensions (width x length x depth)	4.4 x 2.7 x 0.03 in (111 x 69 x 1 mm)	4.4 x 1,81 x 0.03 in (111 x 46 x 1 mm)
Product Weight	0.2 oz (7 g)	0.18 oz (5 g)
Operating Temperature & Humidity	-40° F to +185° F (-40° C to +85° C), 0% to 95% non-condensing	
Storage temperature	-40° F to +185° F (-40° C to +85° C)	
Warranty	Limited Lifetime	